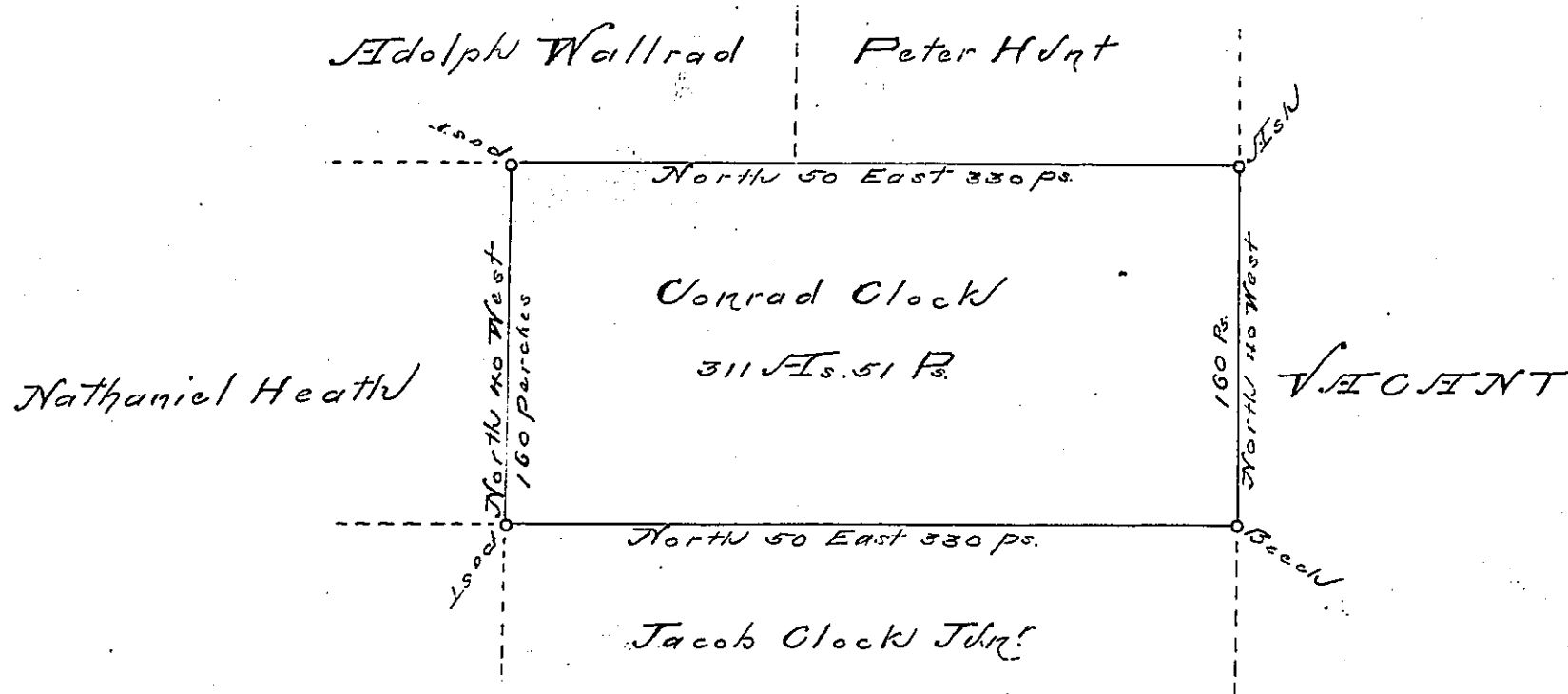


200 P. to the ob1



Draft of a Tract of Land called Pea  
 Nine Bottom situate this side of Wyalosing  
 on the East Branch of Susquehanna in the  
 County of Luzerne adjoining Land surveyed  
 for ob1 Elder containing three hundred and  
 Eleven Acres and Fifty <sup>0/12</sup> Perches and the usual  
 Allowance of six per Centum for Roads.

Surveyed for Conrad Clock the 26<sup>th</sup> Day of  
 October 1862 in Pursuance of an order of  
 Survey N<sup>o</sup> 466 dated the 3<sup>d</sup> April 17 ob1

To  
 Samuel Cochran Esq      Tho Sambourne  
 Surveyor General

IN TESTIMONY that the above is a copy of the original remaining on file in the  
 Department of Internal Affairs of Pennsylvania, made con-  
 formably to an Act of Assembly approved the 16th day of  
 February, 1833, I have hereunto set my Hand and caused  
 the Seal of said Department to be affixed at Harrisburg, this

— sixth — day of — August — 1895.

James Wfatta  
 Secretary of Internal Affairs.